



This free animation is part of our 10 week www.healthyheating.com Integrated Design Course, Part 6 - Building Science for a Cold Climate.

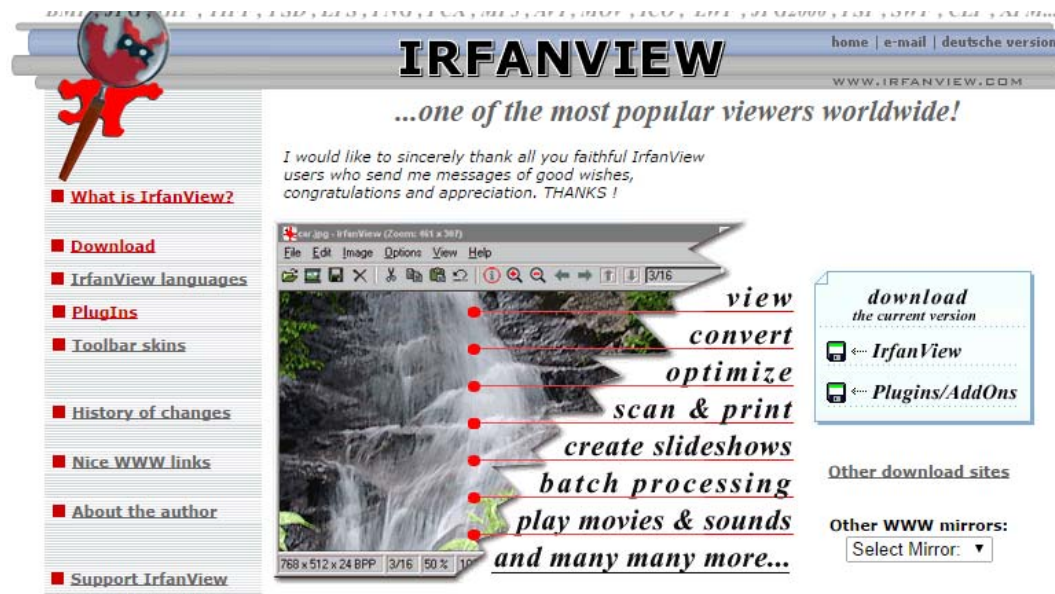
Details: <http://www.healthyheating.com/Integrated-Building-HVAC-Design-Course.htm#.VDmBrfldV8E>

We'll be running this course again in 2015. Please email us at info@healthyheating.com if you want to participate.

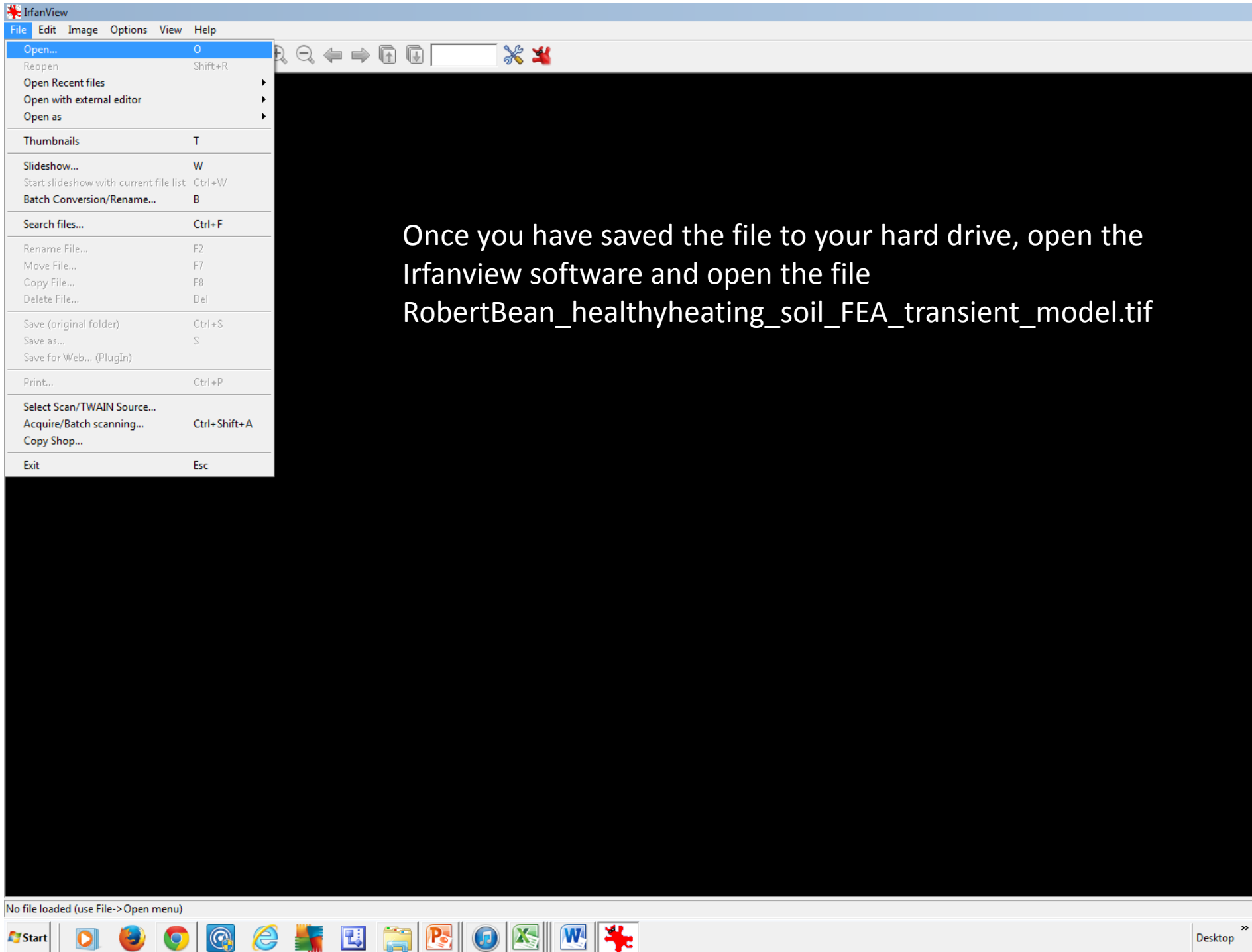
You are free to use this open access file for educational purposes only - provided that this credit is noted:

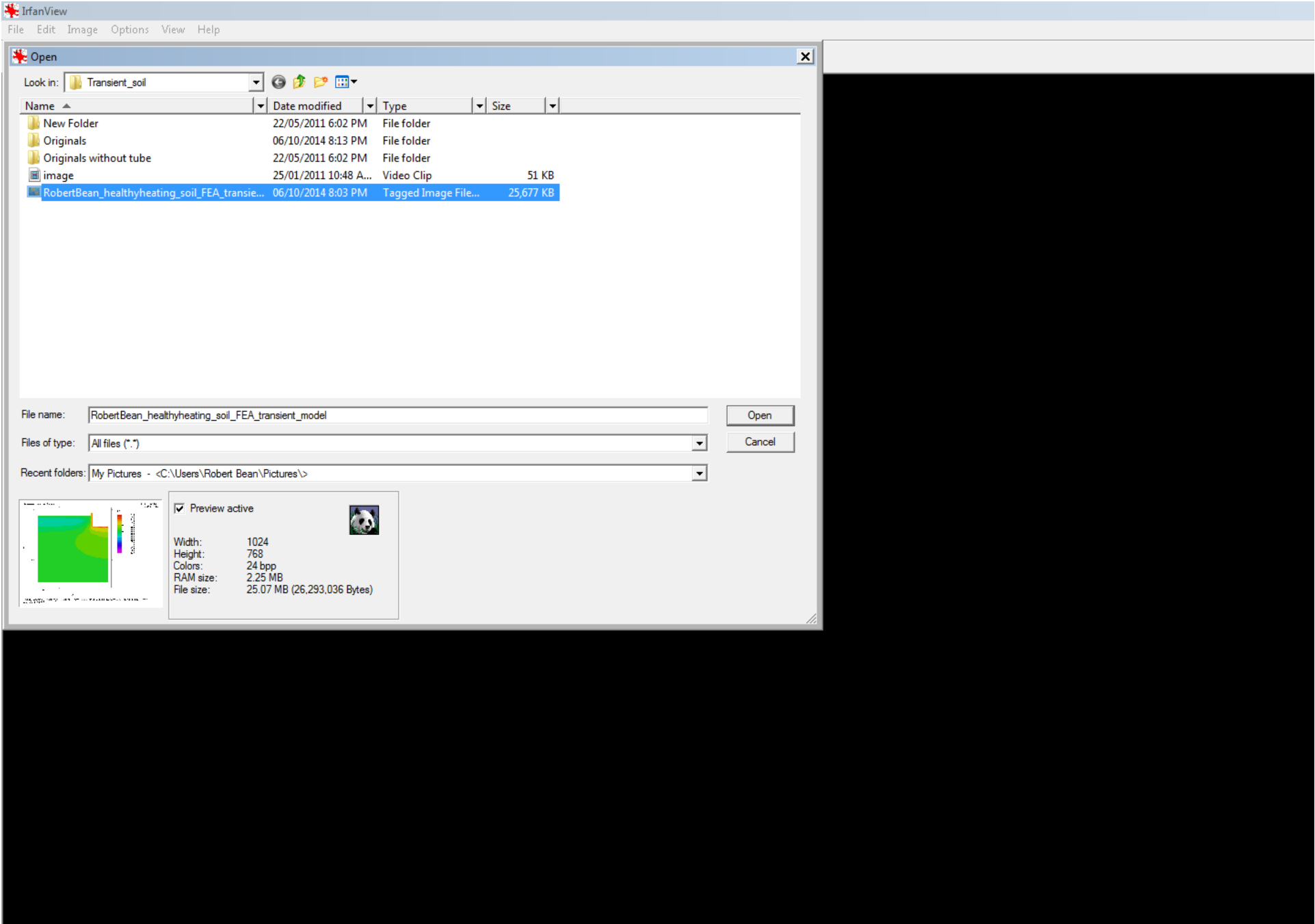
Credit: FEA transient soil analysis used with permission from Robert Bean
www.healthyheating.com

1. Go to: <<http://www.healthyheating.com/Transient-soil-temperatures.htm#.VDmG9vldV8E>>
2. Download file to hard drive: RobertBean_healthyheating_soil_FEA_transient_model.tif
3. Download IrfanView Software and Plug Ins: <http://www.irfanview.com/>



4. Open up IrfanView Software and follow steps on next pages. **Note – we do not provide support for the IrfanView software. We have operated the animations for three years using this tool - it works for us – if it doesn't work for you...you'll need to figure it out on your own...that's one of the reasons why it is free [:@)**





No file loaded (use File-> Open menu)

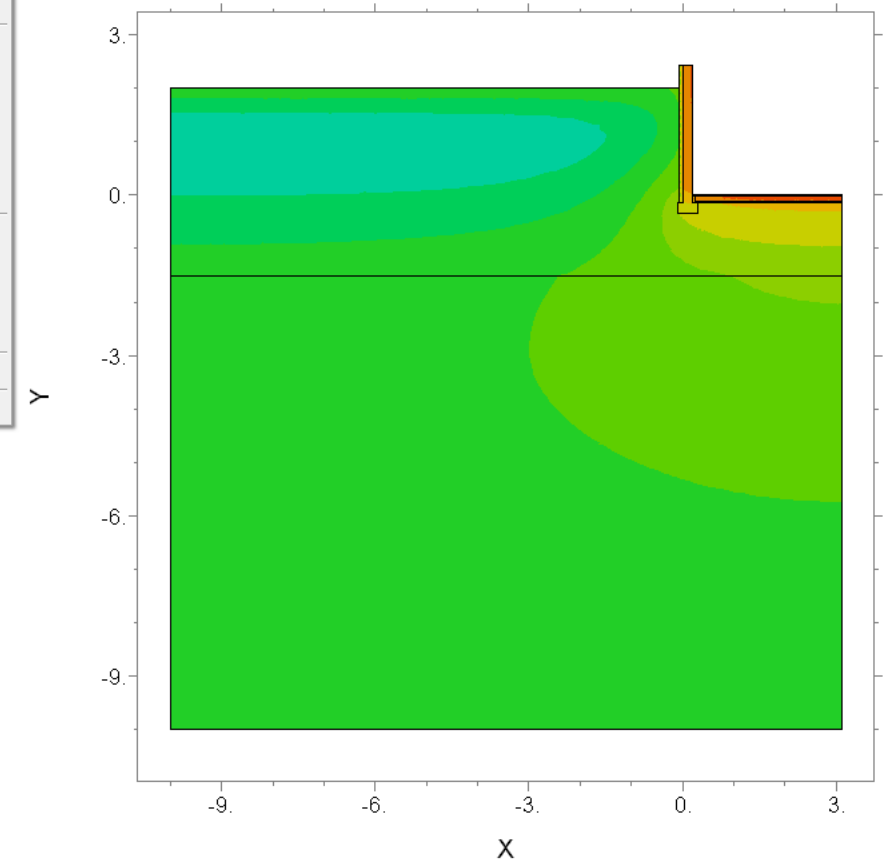




- Show/hide status bar Alt+Shift+S
- Show/hide toolbar Alt+Shift+T
- Show/hide menu bar Alt+Shift+M
- Show/hide caption Alt+Shift+C
- Show Toolbar options/skins...
- Display options (window mode) ▶
- Full screen Enter
- Show Fullscreen options...
- Next File in Directory Space
- Previous File in Directory Backspace
- First File in Directory Ctrl+Home
- Last File in Directory Ctrl+End
- Random File in Directory Ctrl+M
- Refresh F5
- Start/Stop automatic viewing Shift+A
- Zoom In +
- Zoom Out -
- Lock Zoom Shift+L
- Keep Scroll position Ctrl+Shift+K
- Original size Ctrl+H
- Show HEX view F3
- Multipage images ▶

Basement wall and slab

19:18:11 1/24
FlexPDE €



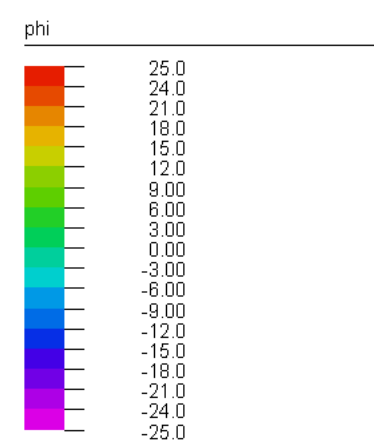
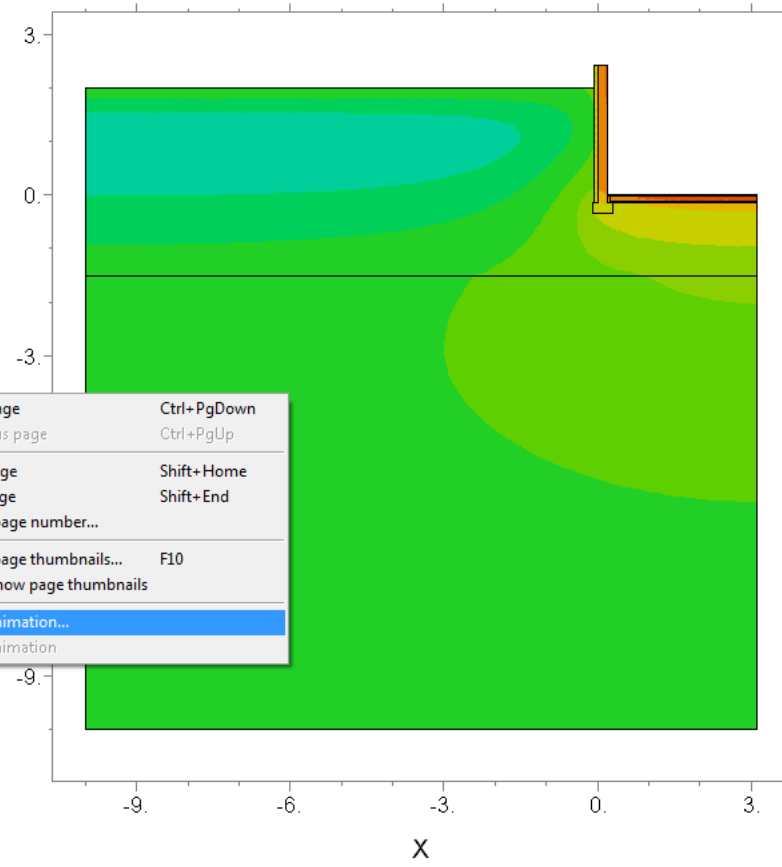
CWEC_Basement_Transient_03: Cycle=0 Time= 0.0000 dt= 3153.6 P2 Nodes=7356 Cells=3599 RMS Err= 1.
Integral= 713.8838



- Show/hide status bar Alt+Shift+S
- Show/hide toolbar Alt+Shift+T
- Show/hide menu bar Alt+Shift+M
- Show/hide caption Alt+Shift+C
- Show Toolbar options/skins...
- Display options (window mode)
- Full screen Enter
- Show Fullscreen options...
- Next File in Directory Space
- Previous File in Directory Backspace
- First File in Directory Ctrl+Home
- Last File in Directory Ctrl+End
- Random File in Directory Ctrl+M
- Refresh F5
- Start/Stop automatic viewing Shift+A
- Zoom In +
- Zoom Out -
- Lock Zoom Shift+L
- Keep Scroll position Ctrl+Shift+K
- Original size Ctrl+H
- Show HEX view F3

Basement wall and slab

19:18:11 1/24
FlexPDE €



- Next page Ctrl+PgDown
- Previous page Ctrl+PgUp
- First page Shift+ Home
- Last page Shift+ End
- Open page number...
- Show page thumbnails... F10
- Auto show page thumbnails
- Start animation...
- Stop animation

CWEC_Basement_Transient_03: Cycle=0 Time= 0.0000 dt= 3153.6 P2 Nodes=7356 Cells=3599 RMS Err= 1.
Integral= 713.8838

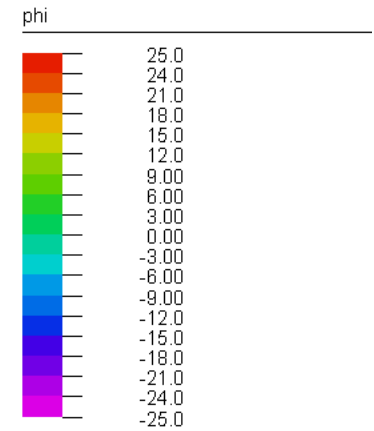
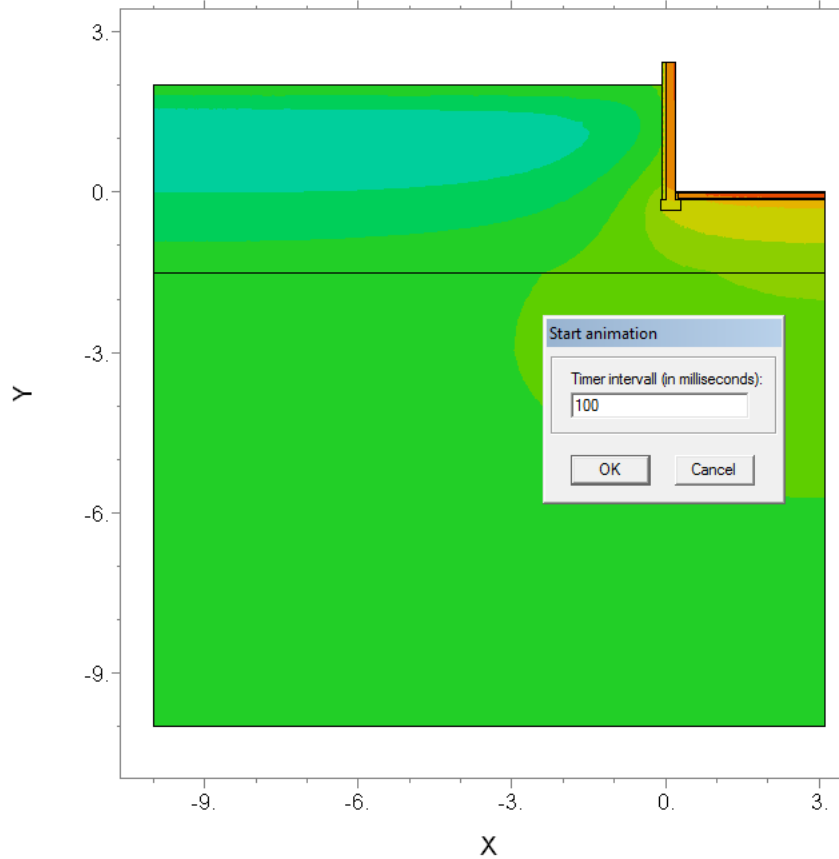


Change the interval time to 100 milliseconds...you can play around to speed up and slow down the animation.

Enjoy!
Robert Bean

Basement wall and slab

19:18:11 1/24
FlexPDE €



CWEC_Basement_Transient_03: Cycle=5223 Time= 3.1536e+7 dt= 6438.0 P2 Nodes=8159 Cells=3978 RMS Err= Integral= 712.2090